

EN

Discover

WALLOON BRABANT



© WBT-D. Erroyaux



Waterlooandbeyond.be

VISITWallonia.be

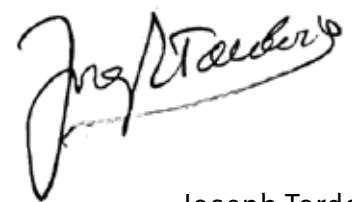
Take a trip in Walloon Brabant...

Walloon Brabant welcomes you with open arms! Make the most of this embrace and explore a region full of unexpected delights. The biggest tourist attractions are clearly historical sites such as the Waterloo Battlefield, Villers-la-Ville Abbey and the Collegiate Church of Saint Gertrude in Nivelles to name but a few. The museums, including some of international renown, such as the Hergé museum in Louvain-la-Neuve or the Folon Foundation in La Hulpe will take you into exceptional worlds, within easy reach of Brussels!

But Walloon Brabant also has hundred of country paths that are great for walks or bike rides. They will take you to discover wonderful natural and cultural sites and soothing landscapes shaped by the seasons. The Walloon Brabant tourist office has suggestions for many different walking routes but there are many more you can come up with yourself. There are some great cycling routes from east to west across this 'Romanesque land of Brabant' which you will quickly fall in love with.

This year with the emphasis on 'slow tourism' - a form of tourism that involves discovering and rediscovering our authentic landscapes, old stones, sprawling countryside, good restaurants and welcoming bars - Walloon Brabant is sure to be a favoured destination for anyone who wants to reconnect with preserved nature and a welcoming region. Our very many local producers also work hard to provide you with quality culinary products. You will love trying these 100% authentic delights on your family outings!

So welcome to the heart of Belgium in Walloon Brabant where there is something for everyone.



Joseph Tordoir
Chairman of Walloon Brabant's Tourist Office

Tourist office of Walloon Brabant



Waterlooandbeyond.be

Reception centre:

Grand Place 1 - Jodoigne

Phone : +32 (0)10 56 09 70

E-mail : info@destinationbw.be



www.waterlooandbeyond.be



Destination Brabant wallon



Destinationbw



© MTBW

PAGE 03



Must sees

PAGE 05



Fresh air and outings

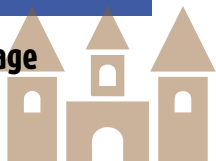
PAGE 09



**In the footsteps
of Napoleon**

PAGE 13

Heritage



PAGE 19



Unusual

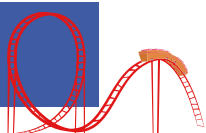
PAGE 21



Land of Artists

PAGE 23

Adventurer's Map



PAGE 25

Culture with the family



PAGE 27

Delicious specialities



PAGE 31

Folklore and traditions



PAGE 33

Accommodation



PAGE 34

Info points



Must sees

WALLOON BRABANT,
THE CENTRE
OF BELGIUM



1. Braine-l'Alleud/Waterloo

Visit the Domain of the **Battle of Waterloo**. Enjoy a multi-sensory experience that is unique in Europe and admire the impressive view from the peak of the **Lion's Mound**. For the full experience, visit **Napoleon's Last Headquarters**, Belgium's only Napoleon museum, and also the **Wellington Museum** where the British army staff set up their headquarters.

2. La Hulpe

The **Solvay Regional Estate** in La Hulpe, listed as exceptional heritage of Wallonia, is one of the most beautiful spots for a walk in Belgium. It includes **Solvay Castle**, built in 1842, and the **Folon Foundation** which presents more than 500 works by the synonymous artist. Take a walk in this wonderful 227-hectare estate 'of 1,000 rhododendrons'.



6. Nivelles

With its 102-metre long nave, two sets of choir stalls and 11th-century crypt, the **Collegiate Church of Sainte-Geترude** is one of the oldest and largest Roman churches in Europe. Underneath it are concealed five churches and a crypt, the largest in our regions. The underground archaeological site below the main nave is certainly worth a visit, as well as the cloister and central steeple which houses the bells. The little copper warrior that you will see perched on top of the southern turret is Jean de Nivelles, or 'Djan Djan'. He strikes his hammer to signal the hours and half hours as he has done for six centuries.

7. Villers-la-Ville

An enchanting place, full of magic and listed as exceptional heritage of Wallonia... Sound good to you? The **Cistercian Abbey in Villers-la-Ville** has been remarkably preserved since the 12th century. Immerse yourself in the past with the new interactive platform to better imagine the abbey in the time of the monks. Enjoy a 180° panoramic view over the whole Abbey and admire the beauty of the five gardens with very different styles. The shop offers a wide choice of local products.

3-4. Wavre

Experience unforgettable sensations at the **Walibi** and **Aqualibi** theme parks or by manoeuvring through the tree tops at the **Adventure Park** in Wavre. These are fully secure environments designed for the whole family. Feel the excitement of one of Walibi's 41 attractions, on one of the 7 slides at Aqualibi or one of the 24 courses at the Adventure Park!

5. Helecline

The **Castle of Hêlécine** stands proudly in the middle of a 28-hectare estate. It was originally used as an abbey. Walk all around the estate and see geese, ducks and swans. Also take your children to the large free playgrounds or the wonderfully landscaped 19-hole mini-golf course. Be charmed by the many attractions of this exceptional place and its activities organised throughout the season.



8. Ottignies

The «**Bois des Rêves**», with its 67 hectares of greenery, is a real peace haven, dedicated to relaxation and leisure. A lake, health trails featuring different obstacles for exercise (also for people with reduced mobility), a mountain biking track for the more sporty types and a playground for children aged 2 to 13 all await you.

9-10. Louvain-la-Neuve

9. Museum L is Belgium's first large-scale university museum. Once you enter its doors, you can make 1001 discoveries among the sciences and arts. Museum L aims to get people to discuss its 1,500 pieces (art, artefacts from civilisations, scientific inventions) from 5 continents ranging from prehistoric times up to the 20th century, while encouraging experimentation and direct contact. Unusual discoveries and questions about the world and our humanity will feature strongly on your visit...

10. Walloon Brabant pays tribute to comic books... The **Hergé Museum** tracks the life and work of Hergé, the creator of Tintin and Snowy, in an exceptional building. Discover one of the greatest artists of the 20th century and learn about his story. The museum houses more than 80 original plates, 800 photos, documents and various items from this multi-talented artist. Hergé takes his nom de plume by reversing his initials: RG, for Georges Rémi.

Fresh air and outings

Take a breath of fresh air!

Within easy reach of Brussels, Walloon Brabant has no end of varied landscapes and large green areas, away from the hustle and bustle. Enjoy charming and comforting places where nature and Man co-exist in perfect harmony.

Scan me



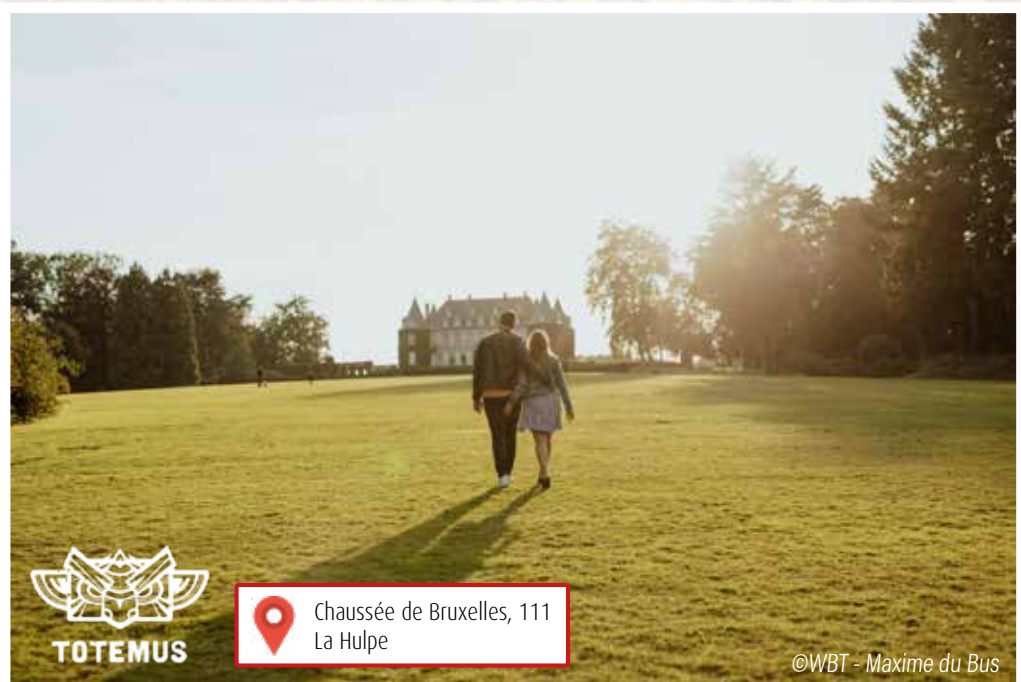
Hundred-year-old trees

On the edge of the Sonian Forest, the **Solvay Regional Estate** is a beautiful site with 227 hectares of greenery. Also known as “the park of 1,000 rhododendrons”, it is considered one of the most beautiful spots for walking in Belgium. Take the time to wander along the footpaths, shelter under the tall trees or sit by the lakes... Take a good look and enjoy the views...

Accessible every day (the castle is not open to visitors)

8am to 9pm from April to September

8am to 6pm from October to March



Preserved estates



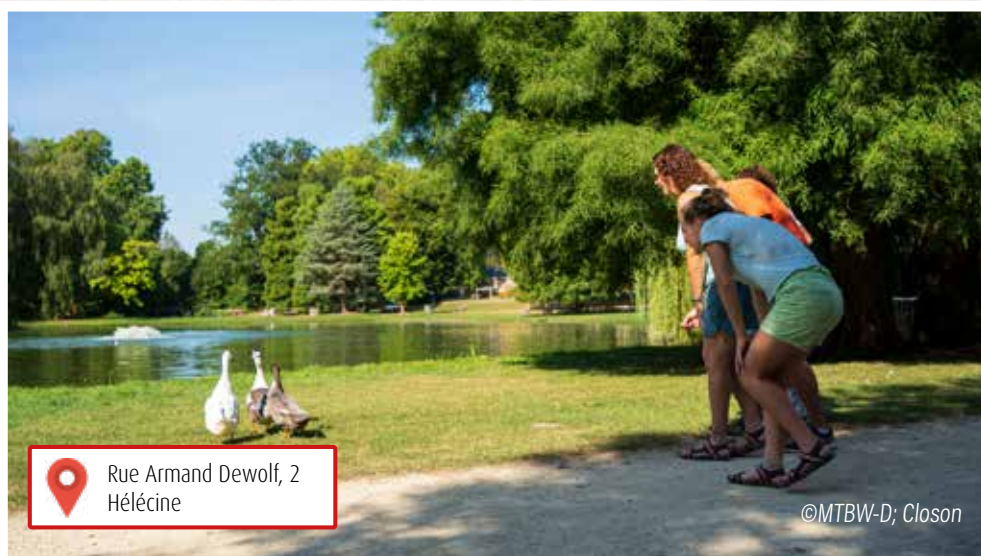
Time will stand still in this wonderful peace haven, the **Bois des Rêves**. This little green paradise is perfect for relaxation and fun. Be blown away by the tranquillity of this place and enjoy the many kilometres of signposted paths, the closed-loop mountain biking route or the health trails. Kids will also love the playgrounds, while their parents enjoy the brasserie on site.

Accessible every day

from 6am to 8pm in April, May and September

from 6am to 9pm from June to August

from 7am to 6pm from October to March



The **Castle of Hélécine**, set in a beautiful 28-hectare estate, has plenty of space to enjoy a variety of activities: walks, a small animal park, playgrounds, mini-golf... The site hosts many events throughout the year and also has a small restaurant where you can prolong the moment and enjoy the stunning view over the lakes.

Accessible every day (the castle is not open to visitors)

from 8am to 9pm in April, May and September

from 8am to 9:30pm from June to August

from 8am to 6:30pm from October to March

More private spots

Walloon Brabant also has plenty of more discreet, lesser known places. One of the great things about our region is that we have large natural spaces while still being close to big urban centres. Recharge your batteries however you like in these various green spaces or beside the water...



Avenue Jules Mathieu, 7
Nivelles

Dodaine Park in Nivelles, a former marshy zone, has been nicely laid out and is now a beautiful reserve with English and French gardens and many statues. It has a large rectangular ornamental lake as well as a natural lake. When the sun is at its highest this place is full of picnickers, and then is perfect for a siesta.

Accessible every day

Originally created as a storm basin and for fishing, **Lac de Louvain-la-Neuve** attracts all generations. Students in this university town consider it a good place to relax, families come for some fresh air and sporty people like to let off some steam here. It is also a good place for wildlife as it has become home to a variety of flora and fauna.

Accessible every day



Rêverie du Promeneur Solitaire
Ottignies-Louvain-la-Neuve

©MTBW



Avenue du Lac, 27
Rixensart

©MTBW

Artificially created in the Vallée de l'Argentine as a spa destination, **Genval Lake** has a romantic feel that everyone is sure to love. But make no mistake! There is also a host of water-based activities on offer to delight young and old (fishing, sailing, pedalos, dinghies, etc.)

Accessible every day

Our top 3 wonderful walks

Medieval walk around Braine-le-Château

Discover the splendours of Braine-le-Château's medieval past during this pleasant 6km walk. This route takes you to discover the municipality's historic centre with its church, Bailiff's House, castle, village mill and pillory.

Three Valley Walk in Grez-Doiceau

This pleasant 9km walk takes you to discover the villages of Grez-Doiceau and its three valleys. The entity's two streams, the Train and the Piétrebais, will guide you on your way.

Les Censes Walk in Mélin

Take in all the beauty and brightness of the village of Mélin on this 9km signposted walk. The Gober-tange stone marks out the landscape. You can also enjoy wonderful viewpoints over the Hesbaye countryside.



Find all the green spaces and a selection of walks in Walloon Brabant at destinationbw.be/en/walks.

In the footsteps of Napoleon

"18 June 1815. Soldiers marching to the rhythm of drums and artillery fire reverberating. French and allied troops clashing with an infernal roar."

Walloon Brabant may well be Belgium's youngest province but it is deeply rooted in European history.

Scan me



At the heart of the Battle of Waterloo

Relive the famous battle as if you were there!

The **Domain of the Battle of Waterloo** incorporates 4 different places on the battlefield.



The **Memorial Museum**, buried at the foot of the Lion's Mound, traces the history of the clashes. Guided by a soldier from your favourite army, you will be immersed in the heart of the conflict thanks to a novel 4D film, uniforms, animated maps, multimedia animations...



From its 40-metre peak, the **Lion's Mound** offers a unique view over the battlefield. This huge tumulus stands at the place where it is thought that the Prince of Orange was injured before becoming King of the Netherlands. The lion, standing at the peak of the mound, symbolises the victory of the monarchies.

Just next to this, climb up the stairs to the **Panorama**. This huge fresco, created in 1912, immerses you in one of the key moments of the conflict.

The last authentic witness to the battle, **Hougoumont Farm** is without doubt the best preserved monument in terms of how it looked the day after 18 June 1815 when it was the most violent point of the Battle of Waterloo. An impressive multimedia show will immerse you in the heart of the fierce combat between French and English troops.

Open every day
from 10am to 6:30pm from April to June, in September and in October
from 9:30am to 7:30pm in July and August
from 10am to 5:30pm from November to March



©Administration communale Braine-l'Alleud



Route du Lion, 1815
Braine-l'Alleud

Meeting soldiers, cannon fire, introduction to the weapons, demonstration of musketry...
See all the activities organised from April to October at www.waterloo1815.be.

Napoleon & Wellington

Napoleon and the Duke of Wellington left numerous signs that they were here.

Follow the French troops to **Napoleon's Last Headquarters** during the hours leading up to the battle. This is the only Napoleon museum in Belgium. In a traditional and authentic setting it houses a multitude of artefacts, mostly from the French army, including Napoleon's camp bed.

The Emperor devised his strategy and battle plans here the day before the clashes of 1815 in Waterloo. Emphasis is put on the events of the night of 17 to 18 June and many anecdotes from civil and military life.

*Open every day
from 9:30am to 6pm from April to September
from 10am to 5pm from October to March*



 Chaussée de Bruxelles, 66
Vieux-Genappe



 Chaussée de Bruxelles, 147
Waterloo

The Duke of Wellington also took over another place: **Mont-Saint-Jean Farm**. He set up a field hospital there to treat nearly 6,000 English soldiers. Today, this place houses the permanent exhibition 'Le revers de la médaille' which shows the work of surgeons and their instruments used in wartime, a micro-brewery and micro-distillery where the Waterloo beers, gins and whiskies are produced.

Visiting the museum:
- Wednesday to Saturday: 10am to 7pm
- Sunday: 9am to 7pm
Visits (unguided in French) to the brewery and distillery:
Wednesday to Sunday at 3pm - in English on demand

Head to the opposing camp at the **Wellington Museum**. The day before 18 June 1815, the Duke of Wellington chose this old inn to be his headquarters. On the evening of the battle, Wellington wrote his victory report here which was published in the British newspaper The Times. It is from this report that the battle is known today as the Battle of Waterloo, although it took actually place in Braine-l'Alleud.

*Open every day
from 9:30am to 6pm from April to September
from 10am to 5pm from October to March*

"Nothing except a battle lost can be half so melancholy as a battle won" - the Duke of Wellington



 Chaussée de Charleroi, 591
Waterloo

World War II

Scan me



Other wars have also left their mark on Walloon Brabant.
In 1940, French troops attempted to prevent the advance of German troops.
Learn about the history of our region in these exciting museums.

The **First Wing Historical Centre** traces the history of the Beauvechain airbase from the 1930s up to modern day. Planes, engines (including educational ones), vehicles, uniforms and many other historical artefacts from this period are on display. This former farm was occupied by the Germans from 1940, then by the Allies in October 1944 and finally by the Belgian Air Force from 1946.

Open on the 2nd and 4th Sunday of the month, 1:30pm to 6pm



Rue Longue
Beauvechain

©MTBW



Rue Tensoul, 5
Chastre

©MTBW

A Moroccan regiment decided to install its headquarters at the school in Chastre in May 1940. Years later, this same building was chosen to house the **1st French Army Museum at Cortil Noirmont**. On display are weapons, ammunition, uniforms, documents from the time, maps, etc. to help visitors understand the operations undertaken by the Belgian, French and British armies as part of the "Dyle manoeuvre".

Open from May to September: Sundays and bank holidays, 2pm to 6pm

A bit further on, in Perwez, a father and son have assembled thousands of artefacts and around sixty mannequins in the family farmhouse to show the equipment used at the time.

The **Museum of Remembrance 40-45** gives visitors a better understanding of the period of the 1940 invasion, occupation and liberation.

Open on reservation

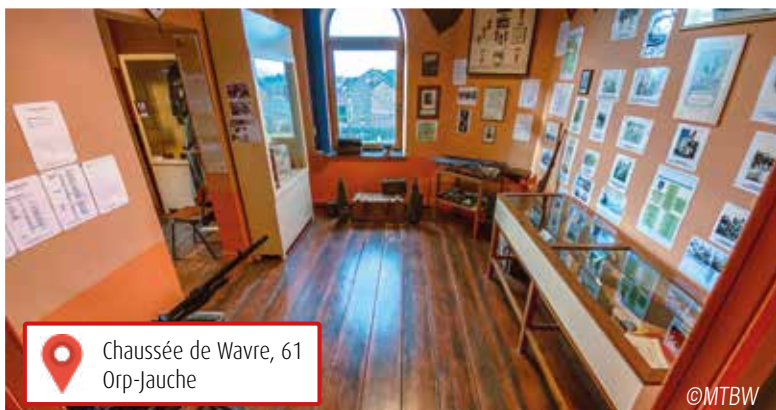


Rue d'Orbais, 2
Perwez

©MTBW

Finally, the **Museum of the 1940 French Cavalry Corps** in Orp-Jauche presents numerous uniforms, weapons and ammunition of the French soldiers from May 1940. Here you can relive the first tank battle of World War II.

Open on reservation



©MTBW

Chaussée de Wavre, 61
Orp-Jauche

Information boards have been installed in Sart-Risbart, Perwez, Ramillies and Orbais to show the magnitude of the combat that took place in the region in 1914 between Belgian/French and German soldiers.

Heritage Secrets

The old stones must really have some stories to tell... Be enchanted by these amazing places with so much history and uncover the mysteries of the communities that have lived there!

Unique and unmissable sites can also be found in Walloon Brabant.

Scan me



Villers-la-Ville, a monk's life

Listed as exceptional heritage of Wallonia, the majestic **Villers-la-Ville Abbey** has been remarkably preserved since the 12th century. Be blown away by the serenity of this place in its green setting. The ruins reflect several architectural styles and are testament to 870 years of history, from the Middle Ages to modern day. Use the interactive platform on your smart-phone to better imagine the abbey in the time of the monks.

Open every day
from 10am to 6pm from April to October
from 10am to 5pm from November to March



The abbey's five gardens are a great place to recharge your batteries. The garden of scents will arouse your sense of smell while the meditative trail will give you a moment of full consciousness.



Did you know?

The abbey started to see tourists arrive from the 19th century. Victor Hugo even visited it on three occasions! Go and look for some words that he engraved on a wall.

Villers-la-Ville Abbey is also a micro-brewery and vineyard that produce delicious beverages!



Beautiful Nivelles

The impressive Collegiate Church of Saint Gertrude stands proudly on the main square in Nivelles. Five successive churches, built from the 7th to 10th centuries preceded the Romanesque church. The daughter of Pépin the Elder, Gertrude, also great-great-aunt of Charlemagne, was the first abbess.

With its impressive 102-metre nave, two sets of choir stalls, 11th-century crypt, remarkable cloister and central steeple, the Collegiate Church of Saint Gertrude is one of the most important Rhenish Romanesque monuments in Europe.

Open every day (office on Sunday mornings)



Grand Place de Nivelles



©WBT-D. Erroyaux



Did you know?

Djan-Djan has been watching over the town and its inhabitants since the 15th century. This 350kg automaton from gilded brass was a gift to the town of Nivelles from Charles the Bold. Can you find it?

Visit the **old Saint-Jacques district**, a stone's throw from the Collegiate church, and explore its pretty little streets where 15th-century pilgrims would have come on the Way of St. James.



© WBT - Denis Erroyaux



On 29 September each year, St. Michael's Day, or the following Sunday, the '**Tour Sainte-Gertrude**', a 15km procession, is organised in the Nivelles countryside. Signs of this can be found dating back to the 13th century.

Medieval Braine-le-Château



Braine-le-Château takes its name from the feudal castle, founded in the 13th century by the Lords of Trazegnies. Turned into a stately home in the late 15th century, the **Castle of the Counts of Hornes** is a real gem! The interior is not open to visitors but the estate is accessible for guided tours and certain events such as the unmissable annual concert.



©RSI Braine-le-Château



©Braine-le-Château/RSI



Grand Place de
Braine-le-Château

Braine-le-Château has a notable history dating back to the Renaissance.

See the impressive gable of the **Bailiff's House**, the person responsible for administering justice and monitoring governance in the 16th century.

On the village square, the **stocks** that date from 1521 are made from late Gothic style blue stone. Criminals would be publicly shamed here during the Old Regime. This monument which is unique in Europe has been listed as protected heritage since 1936 and the lanterns returned in 2021.

Accessible without guide

Industrial Rebecq

Now converted into a cultural and tourism centre, the **Mills of the Dukes of Arenberg** were built in the late 14th century on the banks of the Senne. The main mill today includes impressive machinery, the **Porphyry Museum** and temporary exhibitions. The **Small Arenberg Mill** is home to the **House of Beer**.

Accessible on reservation



©MTBW



Rue Docteur Colson, 8
Rebecq



©MTBW



Rue de Rebecq, 66
Rebecq

Quenast, part of Rebecq, is also known for its **quarry**. It is Europe's largest open-pit quarry with an area of 140 hectares and is up to 125 metres deep in places. Porphyry, formed 435 million years ago from cooled magma, has been mined here since the 17th century and was used to make the famous Belgian cobblestones.

Accessible on reservation

Follow us

Find us on :



Instagram

facebook

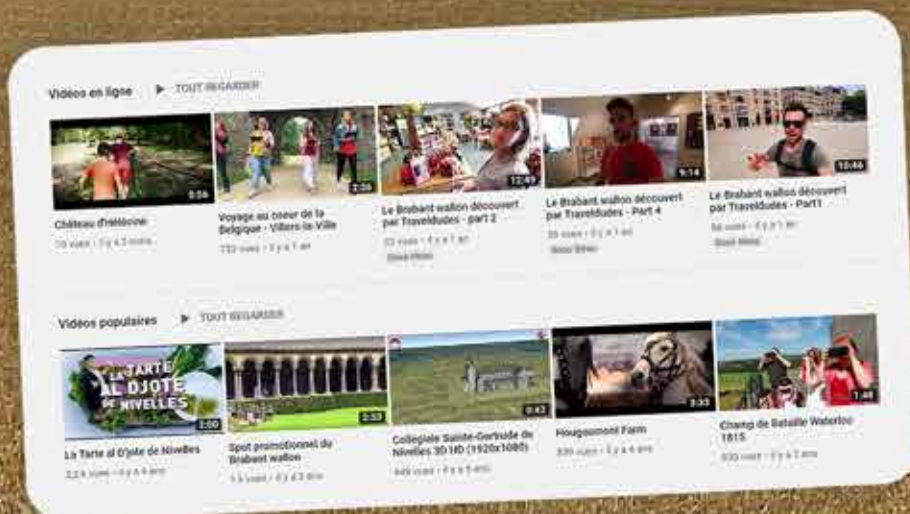
YouTube



#destinationbw



Destination Brabant wallon



Destination Brabant wallon

Unusual

Walloon Brabant contains many little-known treasures. Far from the crowds of the unmissable tourist sites, small museums are well worth a visit... Passionate people will very often tell you the story of a whole life!

Archery Museum

Scan me



Real centre of Belgium

Did you know that the **geographical centre of Belgium** is in Walloon Brabant, and more specifically in Walhain? But this was not always the case. A metallic structure has been erected in this place which symbolises different elements of Belgium: the base represents the Earth's crust; the triangle is a simplified diagram of Belgium; and the three pylons symbolise the three regions.

The centre of Belgium used to be in Ittre as the three cantons in the east were not part of the kingdom.

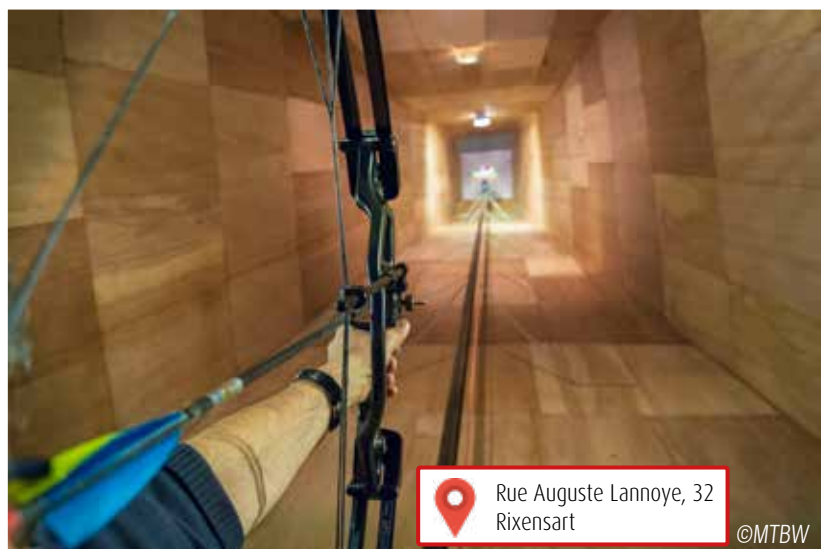
Accessible without guide



Archery in a tower

The **Archery Museum** in Rixensart has been set in a tower since 1928 to allow for popinjay. The tower is today listed as protected heritage. The museum looks back at the use of the bow from prehistoric times up to modern day and the emergence of vertical popinjay as a leisure activity.

Open on Thursdays from 7pm to 8pm



Fairy tale castle

In Rixensart, a beautiful Renaissance castle is listed as exceptional heritage of Wallonia. **Rixensart castle** has been the residence of the Princes of Merode since 1715.

Open during events



Forge of happiness

The **Forge Museum**, also known as the 'Forge of happiness', is the only survivor of Ittre's 8 forges. The museum shows how the blacksmith profession has evolved through the ages. You can see the tools and equipment necessary for the work of blacksmiths and farriers. Inspired by a Scottish custom, newlyweds can come here to celebrate their love and receive the 'recipe for happiness' from the smith.

Accessible on reservation

Land of Artists



In Walloon Brabant we are lucky enough to have had some internationally renowned Belgian artists. Go and discover their fantastic worlds and see the art in all its splendour... Be blown away by the imagination and creativity of all kinds of artists.

Scan me



First stop: the university town of Louvain-la-Neuve.

Go and see Hergé, the creator of Tintin and Snowy, at the **Hergé Museum**. You will be immersed in the world of the inventor of the ligne claire and discover the story of Tintin, Belgium's most famous reporter, and his creator. The museum houses more than 80 original plates, 800 photos, documents and various items from this multi-talented artist...

Open Tuesday to Friday 10:30am to 5:30pm
Weekends 10:30am to 6pm



Rue du Labrador, 26
Louvain-la-Neuve

©MTBW - Nicolas Borel. Atelier de Portzamparc 2021



Place des Sciences, 3
Louvain-la-Neuve

©MTBW

Then head to **Museum L**, set in a building that is symbolic of modern Belgian architecture. This is Belgium's first large-scale university museum. Become Indiana Jones for the duration of the visit and discover more than 1,500 artworks from all types of civilisations. "Invention. Dialogue. Quite an art" such is the ambition of Museum L.

Open Tuesday to Friday 9:30am to 5pm
Weekends and bank holidays 11am to 5pm.

Good tips

Entry is free to some museums on the first Sunday of every month! More info at artsetpublics.be

+ An open-air canvas

Street art can be seen all over the town.
More info at www.tourisme-olln.be



©MTBW

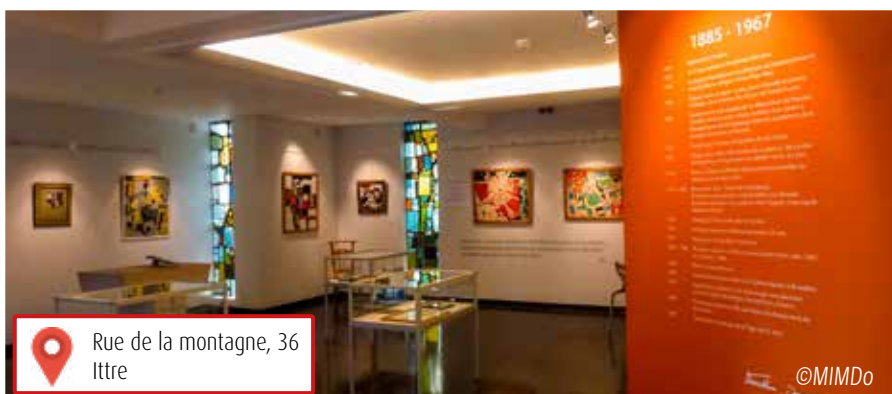
Now let's leave Louvain-la-Neuve for the **Folon Foundation** in La Hulpe. This museum presents the multi-faceted work of the artist Jean-Michel Folon: watercolours, silkscreen printing, engravings, posters, distorted objects, stained glass, sculptures... with over 500 pieces.

Open Tuesday to Friday 9am to 5pm,
Weekends and bank holidays (except Mondays)
10am to 6pm



Drève de la Ramée 6A
La Hulpe

©MTBW



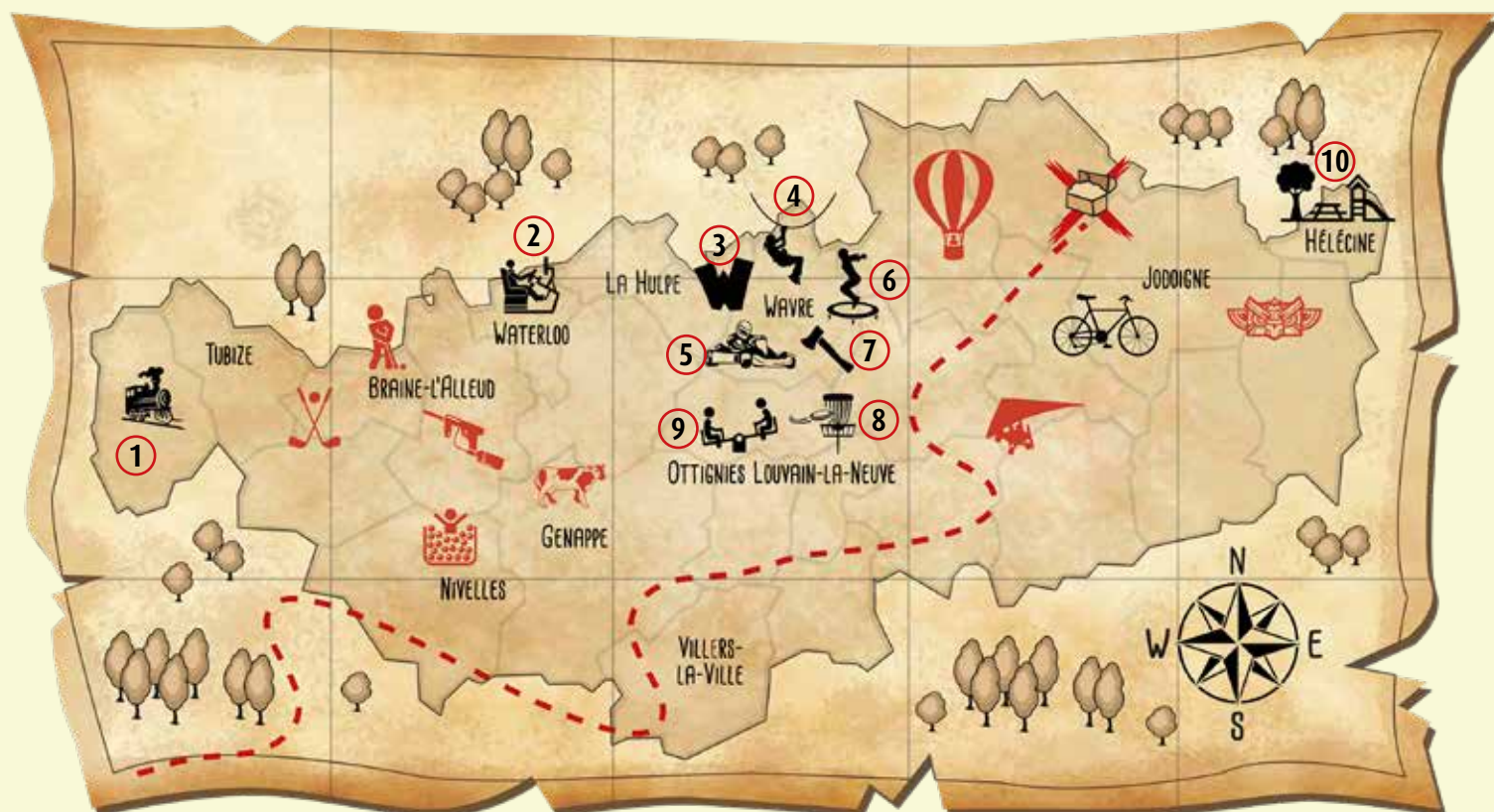
Rue de la montagne, 36
Ittre

©MIMDo

Final stop: the **Marthe Donas Museum** in Ittre, set in a pretty white chapel. Admire the colourful work of Marthe Donas, a 20th-century Belgian artist who was the first woman to represent abstract painting in Belgium.

Open on Tuesday and on Saturday 1pm to 5:30pm
On Sunday 11am to 5:30pm

Adventurer's Map



In Walloon Brabant you will find no end of fun activities for both young and old! Overcome your fears, tremble with excitement or just have good fun with family or friends!

Jump on board the **petit train du bonheur** in Rebecq (1) or get behind the wheel of a racing car in a **simulator** in Waterloo (2).



Scan me



In Wavre, spend a fun day in the **Walibi** (3) family theme park and the water version **Aqualibi**, overcome your fears at the **Adventure Park** (4) where you can choose from dozens of routes in the trees, take possession of a go-kart at **Wavre Indoor Karting** (5), jump as high as you can at **Maxi-jump** (6) or throw some axes at **Crazyaxes** (7) to let off some steam.

Want to throw something else? Do not miss the **Disc Golf** in Louvain-la-Neuve (8)! The **play areas** in the Bois des Rêves (9) and at the Castle of Hélécine (10) or the **Escape games** and **virtual reality** centres will serve as playgrounds for young and old kids! Also discover the **adventure bags** in Genappe, Villers-la-Ville and Wavre, created by tourist organisations, and find an answer to the riddle.



All over the province you can board a **hot air balloon**, a **light aircraft** or a **biplane** and fly over the surrounding area. You will really be impressed! There are also numerous **golf** and **mini-golf courses** and **paintball** and **laser game** facilities in various locations around the province. Younger family members will also enjoy spending time in an **indoor play area** or an **educational farm**.

Do you know about the **Totemus treasure hunts**? They are a cross between treasure hunts and geocaching and are available on a free app. Walloon Brabant has one per commune. Also discover **Gemotions**, another treasure hunt app using SMS, or **geocaching** to use the proper term. There are more than 1,300 geocaches in Walloon Brabant!



More info at: destinationbw.be/en/discover/all-the-fun-activities

Culture with the family

Walloon Brabant offers fantastic family activities! Especially as there is something for young and old... As well as the unmissable sites, other smaller places are great for family visits. Go to www.destinationbw.be/with-the-kids.

Scan me



Culture at the museum



©MTBW

When it comes to museums, the **Folon Foundation** organises watercolour workshops to learn about Folon's emblematic themes in a creative way. And for the kids, a special tour will let them meet the characters and explore their meaning through play.



Museum L offers a wide range of activities to develop children's creativity: creative workshops, 3 experimentation labs (engraving, sculpture and colours), relaxation spaces and even a picnic room for sharing a good meal...



©MTBW

At **Napoleon's Last Headquarters** children can relive the famous night before the Battle of Waterloo in a fun and educational way. They will learn about Napoleon and his troops through numerous games, puzzles and items that they can handle.



©MTBW

At the **Domain of the Battle of Waterloo**, children can learn about the lives of the soldiers and women in 1815 through numerous re-enactment activities, a 3D film, augmented reality, handling of objects, etc. They will also discover how animals lived at that time on **Hougoumont Farm**.



©MTBW



©MTBW-D. Clason

Villers-la-Ville Abbey is a wonderful setting for a walk. Children are free to run around and learn about the lives of medieval monks.



©MTBW

Throughout the year, the **Water and Fountain Museum** organises a series of inter-generational activities as well as permanent activities such as a treasure hunt in the Bois des Rêves.

In Hélécine, the **Walloon Brabant's archaeological museum** takes children back in time to learn about archaeology in a fun way. 400 metres from there is the **Armand Pellegrin Museum** where you can get an idea of the school environment of the past. Teaching practices of yesteryear are shown here.



©MTBW-Creative Light

Delicious specialities

Walloon Brabant has no shortage of delicious local products made by passionate professionals! From starters to desserts, discover all the delicious specialities and the drinks that wonderfully accompany them...

Scan me



In the land of tarts

Walloon Brabant is known as the province of tarts. Sweet or savoury, they are the preserve of the brotherhoods. This is the case with **Blanke dorèye** and **tarte au stofé**, both made with fromage blanc, **Vi Paurin** with apples, **brown sugar tart** and **tarte du Lothier**.



©Vi Paurin



©MTBW

You have to try the **Tarte al Djote**, a speciality of Nivelles! This savoury tart consists of bêtcheye (fermented cheese made from skimmed cows' milk) and chard, but also eggs, chopped parsley, sliced green onions and butter. The custom is to eat it hot with a big dollop of salted butter. Its little sister, the **Tarte au crastofé**, is made with full-fat cheese (crastofé). It is also eaten hot and covered with salted butter. This is a speciality of Ittre.

You can be certain to find something you like among Walloon Brabant's **15 craft chocolate makers**. These experts in taste will take you on a journey into their traditional and creative world of sweet treats... It is even possible to visit some of the workshops! If you like biscuits, try the **Canestia of Nivelles**, similar to the Couque de Dinant.



©MTBW

Secrets to making tarte au stofé (Wavre):

(from the brotherhood itself...)

Ingredients for the dough (24cm diameter):

200g flour
60g unsalted butter
10g yeast
10g sugar
50ml milk
1 small egg
3g salt

Ingredients for the filling:

250g fromage blanc
60g crème fraîche
3g almond extract (Baris)
60g melted unsalted butter
100g sugar
25g mixture of equal parts almond powder and sugar
25g crushed macaroons.
3 eggs (yolks separated from whites)

Mix the butter and sugar to obtain consistent dough. Then add the egg and milk. Stir well. Add the flour, salt and yeast.

Roll out the dough and transfer to a slightly buttered tin.

Mix all the ingredients in a container to make the filling, separating the egg whites from the yolks. Whisk the whites until stiff and carefully add them to the mixture.

Spread the mixture on the compote, place in an oven pre-heated to 220°C and cook for approximately 25 minutes depending on the oven.



©Jakari

Savoury specialities of Walloon Brabant



A breed of pig from Walloon Brabant is internationally renowned. This is the **Piétrain pig**, also known as the breed of four hams. In Orp, the **Vête Trêpe**, or green sausage, is a clever mix of fresh meat and kale. Its originality and flavour come from the careful dosing of herbs and spices which has been kept secret to this day.



Folx-les-Caves mushrooms are eaten stuffed with a mixture based on boiled ham, mushroom stalks, shallots, parsley and garlic, covered in breadcrumbs and placed in the oven.

The **Bâton de Saint-Bernard**, a slightly smoked pure pork sausage, embellished with hazelnuts noisettes and local beer, is the speciality of Villers-la-Ville. More unusual, **hatches** is an ancestral speciality of Grez-Doiceau, consisting of pigs' ears, heart and tongue. The different pieces are boiled in salty water and cooked with raisins, prunes and red currant jelly.



At **Saint Véron snail farm** you can learn about snail breeding from the laying of eggs to the collection of snails. Also try some products prepared in different ways.

Finally, the Nivelles **double** consists of two buckwheat flour crêpes wrapped around a filling of seasoned full-fat cheese: Bêchéye.



Beers, wines and bubbly

Belgium and beer is a real love story... Walloon beers are included on UNESCO's intangible cultural heritage list. It is therefore unsurprising to find **16 breweries and micro-breweries** in Walloon Brabant alone and nearly 70 beers! Discover Wallonia's only **gueuzerie** (place where Gueuze is blended), the Gueuzerie Tilquin in Rebecq.

Scan me



Walloon Brabant has a **dozen vineyards**. Meet passionate wine growers, hear their stories and, above all, taste their exceptional wines!

Liqueurs, fruit wines, gins, whisky and even some bubbly are on the menu. Cheers!



Scan me

Did you know that bubbly is also produced in Walloon Brabant? Some vineyards specialise in sparkling wines, such as Domaine de Melle-mont, Domaine du Chapitre and Domaine de Glabais.

«Simply put, it is quite magnificent on the palate. It is fine, subtle and elegant with a nice floral note in the nose and a wonderful structure in the mouth.» Eric Boschman, Belgian sommelier about Domaine de Glabais.



Made in BW

In Walloon Brabant, the '**Made in BW**' label is an indicator of local products. The association's mission is to optimise the development of local distribution channels. Made in BW helps producers find new partners, ensures the tracking of orders and provides numerous deliveries. More info at www.madeinbw.be

Find all our specialities on destinationbw.be/en/discover/terroir.



Folklore and traditions



In Belgium there is an unquestionable spirit of welcoming and sharing... Walloon Brabant is proud of its very rich living heritage which sets the pattern of the seasons. Folklore events have transcended the centuries to reach our day practically intact.

Brotherhoods

Guarantors of authenticity, Walloon Brabant's **17 brotherhoods** aim to protect local customs, culture, folklore and gastronomy. Dressed in their togas, aprons or cloaks, their members are always very happy to share their expertise.



Land of traditions



Carnivals, processions, local festivals and tours throughout the year teach us about these popular traditions... Learn here about some **processions** in Walloon Brabant.

In mid-September, take part in the **March of the Chouans** in Incourt along with a hundred characters dressed in costumes from the late 18th century and draught horses. This route is 8km and includes stops to watch dancing.

On Trinity Sunday, the **Saint Renelde procession** pays tribute to the patron saint of the village of Saintes (Tubize). Interesting fact: all participants ride on horses to accompany Saint Renelde's shrine on the 28km pilgrimage.

The **Saint-Barthélemy procession** in Bousval takes place on the first Sunday following 24 August. The saint's statue is put on a float pulled by two Brabant horses and paraded through streets and fields along a 5km route stopping off at the seven chapels.



Accommodation

Want to extend your getaway in Walloon Brabant? Whether for a short or long stay, our region has no shortage of accommodation options. Some even offer packages combined with tourist trips at special prices.

Choose a luxury or family hotel, a guesthouse, a rural cottage or a farm stay or maybe an unusual accommodation... Whether you are looking for comfort, authenticity, closeness to nature or hospitality, you are sure to enjoy your time in Walloon Brabant!

Lots of hotels and accommodation options can be found on the **online booking** platform. Find them all at **destinationbw.be/accommodation**. Your trip is just a few clicks away... Enjoy!

Scan me



Tourist information points

Where can you find tourist information (info, brochures, etc.) in Walloon Brabant?

Reception centre of Walloon Brabant's main tourist office

Hôtel des Libertés

Grand Place 1 in Jodoigne

We are open every day 9am to 5pm, except Mondays.

From 1 April to 30 October, 10am to 6pm on Friday, Saturday and Sunday.

Napoleon's Last Headquarters

Chaussée de Bruxelles, 66 in Vieux-Genappe

Times to be confirmed on the website of Napoleon's Last Headquarters

Walloon Brabant's other tourist offices.



Remember to check opening days and times before visiting.



Royal Syndicat d'Initiative de Braine-le-Château :

+32 2 366 93 49

Le 38 (Genappe) :

+32 67 77 23 43

Office du Tourisme de Grez-Doiceau :

+32 476 01 51 98

Syndicat d'Initiative d'Hélécine :

+32 19 65 69 90

Visit Ittre :

+32 67 64 87 74

Syndicat d'Initiative de La Hulpe :

+32 2 653 02 33

Office du Tourisme de Nivelles :

+32 67 21 54 13

Office du Tourisme d'Orp-Jauche :

+32 19 63 02 10

Office du Tourisme d'Ottignies - Louvain-La-Neuve :

+32 10 47 47 47

Syndicat d'Initiative de Rixensart :

+32 2 653 69 37

Syndicat d'Initiative de Villers-la-Ville :

+32 71 87 98 98

Office du Tourisme de Walhain :

+32 10 65 56 56

Royal Syndicat d'Initiative de Waterloo :

+32 2 352 09 10

Visit Wavre :

+32 10 23 03 52

Other tourist information points:

OTP - Musée de la Porte :

+32 2 355 55 39

Syndicat d'initiative de Chaumont-Gistoux :

+32 10 68 72 11



Also contact us by email at info@destinationbw.be
or by phone on +32 10 56 09 70.

**Let's stay
CONNECTED**



Waterlooandbeyond.be



[Facebook.com
/destinationbw](https://Facebook.com/destinationbw)



[Youtube.com
/destinationbw](https://Youtube.com/destinationbw)



[Instagram.com
/destinationbw](https://Instagram.com/destinationbw)

Inspiration, great photos, videos, news,
ideas for trips and places to visit.

Prepare for your stay:
waterlooandbeyond.be



DISCOVER WALLOON BRABANT